

Background Information on participating ACE communities

Walkability Workshop; Montevallo, AL

July 19, 2018

Brewton

Brewton is a medium-sized, inland city in coastal Alabama. Brewton is relatively flat and follows a grid-style street layout, with residences close to downtown and large employment centers such as the hospital and schools; all could be excellent walking destinations and routes. Challenges to walkability include the main road through downtown Brewton (St. Joseph Ave.) which is a three lane main road, single track railroad, and single lane access road (with parking and two-way traffic). The road amounts to roughly a 5+ lane crossing in the downtown area. Brewton's age and condition of sidewalks affect people with disabilities who rely on curb cuts and signals to navigate pedestrian areas.



- Population: 5200
 - 57% white, 40% black, 3% other
- County seat, Escambia County (Gulf region)
- Median household income: \$35,744
- ACE designated 2006
- 85.6% high school graduate
- 29.3% of population under poverty line
 - 47.2% of those under age 18
 - 23.3% of those age 65 or over
- 9.9% unemployment
- How does Brewton commute?
 - Drive Alone: 91.4%
 - Walked: 1.3%

Eufaula

Eufaula is a larger ACE city located on Lake Eufaula. Eufaula follows a gridded street layout and has a flat downtown, although there is a sharp bluff down to the lake. Some residences are located close to downtown, schools, and the hospital. Eufaula relies on lake and historic tourism and small industries. Eufaula's large, diverse downtown is an asset for walkability. Challenges to walkability in Eufaula's core include railroads, large boulevards with multiple lanes of traffic and parking, and the steep drop to the river. Many of the historic structures that line Eufaula's main routes are not accessible as they have step-up entries and very limited accessible parking.



- Population: 13,137
 - 43.7% white, 50% black, 2.3% other
- Largest city, Barbour County (Black Belt region)
- Median household income: \$33,362
- 23.1% of population under poverty line
 - 42.9% of those under age 18
 - 14.3% of those age 65 or over
- 14.3% unemployment
- 80% high school graduate
- How does Eufaula commute?
 - Drive Alone: 85.3%
 - Carpool: 10.6%
 - Walk: 1.1%
- ACE designated 2012



Fayette

Fayette is the county seat and principal city of Fayette County. Located in the Sipsey River Valley, Fayette has recently seen success from its \$3.1 million downtown redevelopment, even as the population of the city has declined. Fayette serves as the major employment center for the region and has an impressive concentration of small businesses in its downtown core. The success of Fayette's downtown is perhaps its most important asset to increasing walkability in the area. However, many residences are located far from downtown and far from major employment centers (the community college, hospital, K-12 schools, manufacturers, and Walmart). Fayette's downtown is flat, but challenges to walkability include four lane streets in the downtown area and a main corridor that is a heavily travelled, five lane U.S. highway.



- Population: 4,619 (declining)
 - 74.5% white, 25% black, 0.5% other
- County seat, Fayette County (West Alabama region)
- Median household income: \$28,846
- ACE designated 2007
- 83.5% high school graduate
- 23.1% of population under poverty line
 - 30% of those under age 18
 - 14% of those age 65 and over
- 9.1% unemployment
- How does Fayette commute?
 - Drive Alone: 85.3%
 - Carpool: 10.6%
 - Walk: 1.1%

Foley

Foley is a principal city of Baldwin County, Alabama's fastest growing county. Foley is a major stop on tourist routes to Alabama beaches and benefits immensely from tourism revenue. Foley has also benefited from a downtown renovation, sports events, and attractions such as an amusement park and a major outlet mall. Assets to Foley's walkability include newly opened bike lanes, almost 30 miles of pedestrian paths, and requirements for new residential developments to devote at least 15 percent of their area to green space. Foley's flat coastal terrain and warm weather also aid walkability and accessibility. Challenges to Foley's walkability include its sprawling development, major traffic during tourist season, and five lane roads in the downtown core.



- Population: 17,607 (93% growth between 2000 and 2010)
 - 77.1% white, 15.9% black, 7% other
- Major city, Baldwin County (Gulf Coast region)
- Median household income: \$42,172
- 15.9% of population under poverty line
 - 33.8% of those under 18
 - 4.2% of those over 65
- 10.2% unemployment
- 92.9% high school graduate
- How does Foley commute?
 - Drive Alone: 85.1%
 - Carpool: 10.6%
 - Walk: 0.4%
- ACE designated 2012



Haleyville

Haleyville is the small, principal city of Winston County near the Bankhead national forest. Haleyville has a hospital and light industry concentrated around the railroad. Haleyville's downtown has a few rolling hills, but is mostly composed of two lane streets (or smaller) with parking. Outdoor recreation opportunities in the surrounding area may attract active individuals more likely to choose walking as their preferred method of transportation. Challenges to Haleyville's walkability include few residences close to downtown, sprawling development, patchy sidewalks, and schools that are not walkable.

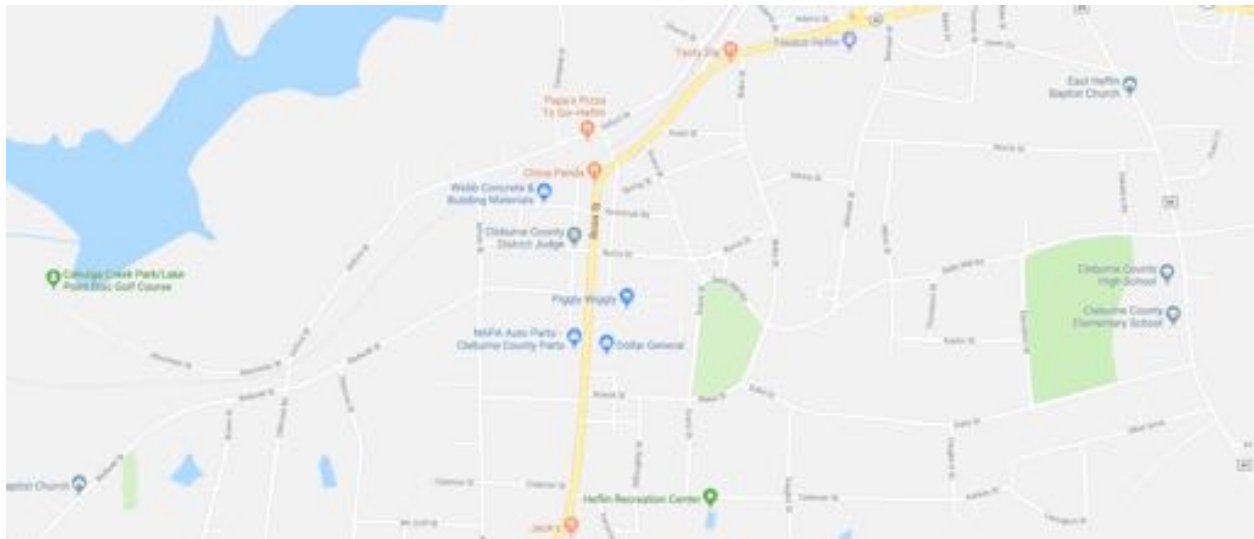


- Population: 4,173 (declining)
 - 92% white, 0.7% black, 7.3% other
- Winston & Marion counties (Northwest region)
- Median household income: \$25,949
- 10.4% unemployment
- 23.8% of population below poverty line
 - 38.4% of those under 18
 - 14.9% of those over 65
- 74.5% high school graduate
- How does Haleyville commute?
 - Drive Alone: 84.1%
 - Carpool: 10.8%
 - Walk: 0%
- ACE designated 2005



Heflin

Heflin is the county seat of Cleburne County and is located on I-20 east of Birmingham. Heflin is easily accessible from the interstate and railroad and serves as an eastern gateway to the Talladega National Forest and other outdoor recreation opportunities. Outdoor recreation in the area is likely to attract active individuals that look for opportunities to walk if routes are available. Many of Heflin's residences are close to the downtown but not walkable because of hills and a lack of sidewalks. Heflin's schools are not walkable because there are no sidewalks. Heflin's downtown is concentrated, but U.S. highway 78 (a 4+ lane road) serves as the main route through downtown. However, due to Heflin's remote location and small population, traffic is not a major concern for walkability and many possible destinations for walking are within 1-1.5 miles of the downtown.

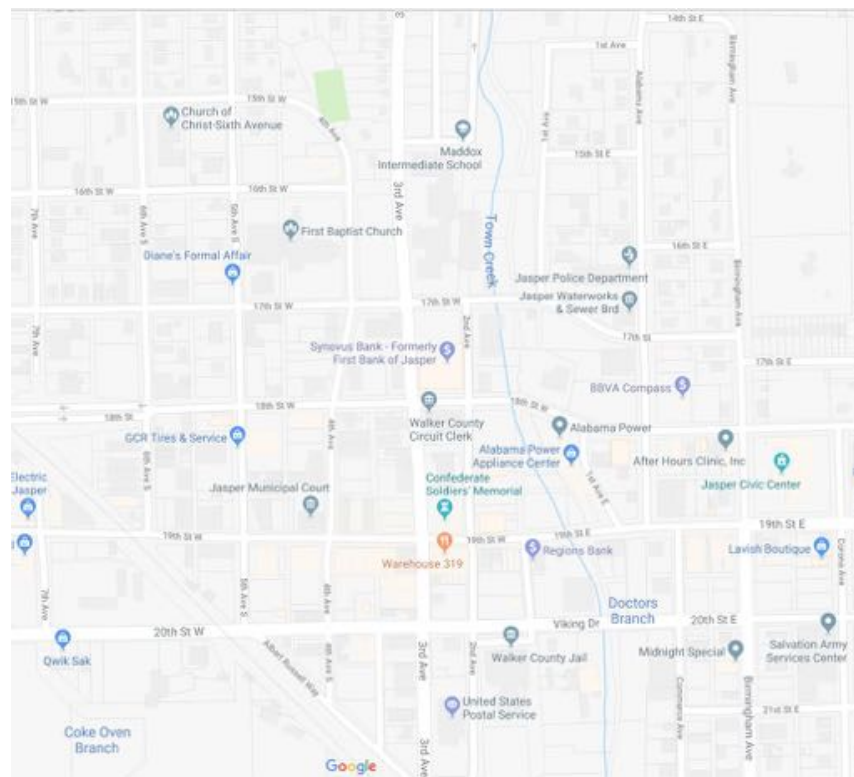


- Population: 3480
 - 87.3% white, 9.4% black, 3.3% other
- County seat and only incorporated city, Cleburne county (Mountain region)
- Median household income: \$22,708
- 12.2% unemployment
- 31% of population below poverty line
 - 53.7% of those under 18
 - 11.6% of those over 65
- 72.8% high school graduate
- How does Heflin commute?
 - Drive Alone: 76.5%
 - Carpool: 18.1%
 - Walk: 0%
- ACE designated 2007



Jasper

Jasper is the principal city of Walker County in the heart of Alabama's historical coal industry. Jasper is the commercial center of the northwest Birmingham metro area. Jasper benefits economically from the newly constructed Interstate 22, tourism to nearby Smith Lake, and abundant outdoor recreation opportunities in northwest Alabama. Jasper's downtown is newly renovated, dense, flat, and does not have major arterial roads in the core. Residences and businesses are close to downtown but railroads are a barrier and schools are not walkable. Jasper's community college and main parks are close to residences and are roughly one mile from downtown on small, walkable neighborhood streets. However, major employment centers are not walkable and many of Jasper's destination retail and services are located on a large highway away from neighborhoods.



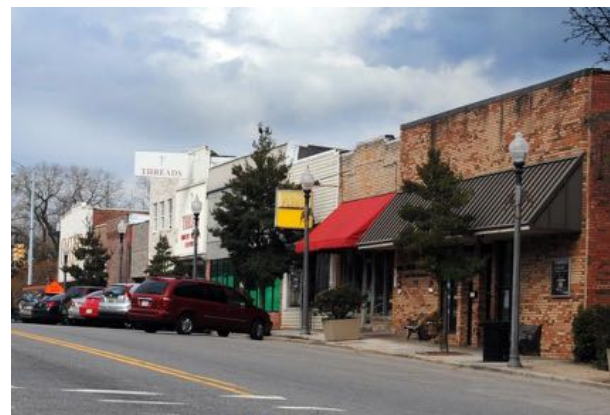
- Population: 14,352
 - 81.3% white, 13.4 % black, 5.3% other
- County seat, largest city, Walker County (Birmingham metropolitan area)
- Median household income: \$39,075
- 85% high school graduate
- ACE designated 2017
- 21.3% of population below poverty line
 - 31% of those under 18
 - 12.1% of those over 65
- 9.6% unemployment
- How does Jasper commute?
 - Drive Alone: 84.2%
 - Carpool: 12.7%
 - Walk: 0.9%

Leeds

Leeds was founded as a stop along stagecoach routes and was largely populated as a company town of the Lehigh cement company, which still operates today in the city's downtown. Leeds is known regionally as a destination retail center and location of the Barber motorsports museum. Leeds is successful because of its retail, location as a major exit on I-20 and the Cahaba and Little Cahaba rivers. The downtown is dense commercially, but many residences are separated by railroads, the river, and industrial centers. Major points of interest are car-centric and not walkable. The elementary school, middle schools, and some large parks are located within walking distance of residences and businesses. The main challenges for walkability in Leeds are railroad crossings and sprawling development.

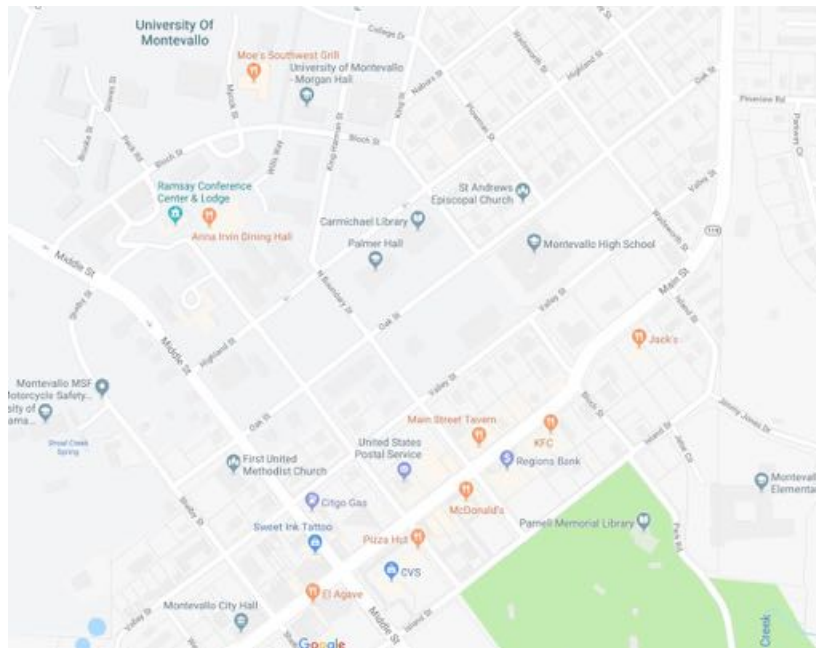


- Population: 11,773 (increasing)
 - 78.7% white, 14.3% black, 7% other
- Jefferson, St. Clair, Shelby counties (Birmingham metropolitan area)
- Median household income: \$56,087
- 14.1% of population below poverty line
 - 21.5% of those under 18
 - 7.8% of those over 65
- 4.8% unemployment
- 88.6% high school graduate
- How does Leeds commute?
 - Drive Alone: 89.4%
 - Carpool: 7.5%
 - Walk: 0.5%
- ACE designated 2013



Montevallo

Montevallo is a major cultural center in Shelby County within commuting distance of Birmingham. Montevallo is home to the University of Montevallo, American Village, and the Alabama National Cemetery. Montevallo's main street is within two blocks of the University, two of its schools, and major parks. The university is a major employer, which might explain the large amount of walking commuters in the city. The city and the university have worked together on projects to increase walkability and connectivity of the university, downtown, and local parks. However, many of the city's points of interest and services are located on two main highways far from downtown. Montevallo's main walkability challenges stem from its historic character: many buildings are old and inaccessible, and a large portion of the University is paved in historic brick.

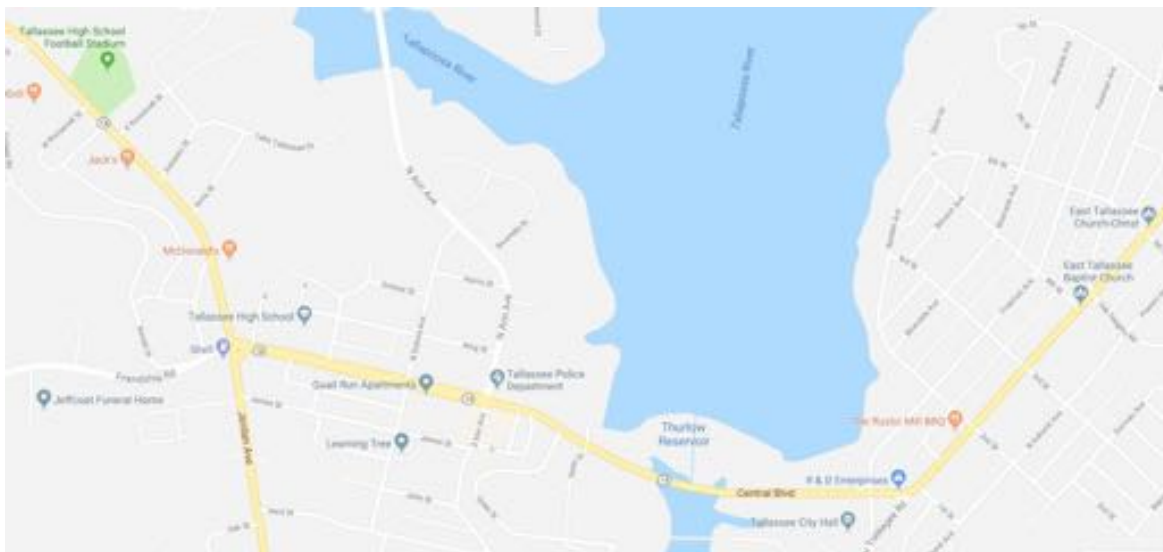


- Population: 6,323 (slightly increasing)
 - 70.2% white, 24.6% black, 5.2% other
- College town, Shelby county (Birmingham metropolitan area)
- Median household income: \$38,472
- 21.5% of population below poverty line
 - 18.1% of those under 18
 - 16.9% of those over 65
- 8% unemployment
- 86.7% high school graduate
- How does Montevallo commute?
 - Drive Alone: 75.7%
 - Carpool: 11.3%
 - Walk: 8.7%
- ACE designated 2012



Tallassee

Tallassee is a small city located at the Thurlow dam on the Tallapoosa River. Tallassee is unique in that the city is separated by the river, which provides excellent opportunities for tourism and outdoor recreation but presents an immense obstacle for walkability given the difficulty of crossing a larger river and security necessities at the dam site. Tallassee's residences are concentrated in its downtown and many city services, like the library, city hall, and high school are in this walkable core. Challenges for Tallassee's walkability include the river crossing, a four lane road functioning as the main downtown street, and a lack of shops and non-government destinations in the downtown center.



- Population: 4,819 (slightly declining)
 - 72.4% white, 23.4% black, 4.2% other
- Elmore and Tallapoosa counties (Montgomery metropolitan area)
- Median household income: \$45,972
- 15.8% of population below poverty line
 - 16.4% of those under 18
 - 10.3% of those over 65
- 12.8% unemployment
- 86.1% high school graduate
- How does Tallassee commute?
 - Drive Alone: 88.4%
 - Carpool: 8.2%
 - Walk: 2.6%
- ACE class of 2017

